



February 2023 Spotlight

The Boys and Girls Club of Chester

Presenter: Angie Johnson, Drug Free Communities Director

Thank you for joining this month's CTC meeting, and a special thank you to Angie Johnson for providing an overview of the upcoming programming the Boys and Girls Club of Chester, including plans for this year's "After Prom!"

Interested in learning more about the Boys and Girls Club of Chester, their current projects, and available resources? Visit their website by clicking the button below:

Learn more

If you would like to contact Angie Johnson for partnership opportunities click [here](#).

Black History Month

Local Events, Programs, and Resources



Delaware County is proud to share a documentary, titled "Learning our History, Celebrating our Future," that illuminates the past struggles of Black Americans in the county. Dating back to some of the darkest periods of American History, this video explores the efforts of Delaware County residents who fought for equal rights for all Americans. The video also explores what efforts the community and County Government are currently making to improve the lives of its all residents across the county.

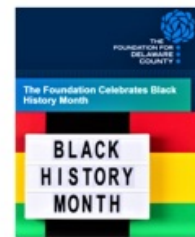
(direct link in chat & will be included in the CTC newsletter)

The County is also hosting a screening of the Documentary *We Been Here*, produced by Delta Sigma Theta Sorority Incorporated Chester (PA) Alumnae Chapter. The documentary looks at the history of Black Americans in Delaware County, and their historical and contemporary contributions.

Date/Time: Friday, February 24, 2023, 6:00 p.m. to 8:30 p.m.

Location: Widener University Founders Hall/ 109

(direct link in chat & will be included in the CTC newsletter)



Visit the Foundation for Delaware County's website for information on local Black history and nonprofit events happening this month. (delcofoundation.org)

(direct link in chat & will be included in the CTC newsletter)

Helpful Links

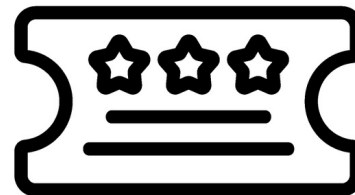
Delaware County Celebrates Black History Month

The Foundation for Delaware County Celebrates Black History Month

Learning Our History, Celebrating Our Future Video

We Been Here Documentary Screening

The winner of this month's raffle was the J. Lewis Crozer Library! A special welcome to the new Director of the Crozer Library, Lauren E. Sands, MSLIS! Thank you for joining us and participating in our poll.



DELAWARE COUNTY CTC NETWORK ANNOUNCEMENTS FEBRUARY 2023

February 2023

Chester Education Foundation


Blueprint for Success Program

Chester Education Foundation is currently recruiting for the *Blueprint for Success* employment program for 18-24 year-old Delaware County high school graduates. See flier for more information:



BLUEPRINT FOR SUCCESS PROGRAM

Need a job? This program is for you!

 **Resume Prep & Interview Coaching!**

 **Paid Internship!**

 **Job Placement!**

Scan this QR code
for more information



Are you a high school graduate and need help finding a good job?

Are you between 18-24 years old and reside in Delaware County, PA?

Chester Education Foundation would love to help you create a **Blueprint for Your Success!** Contact us now to get started!



egreene@chestereducation.org



(610) 364-1212



419 Ave of the States,
Suite 700
Chester, PA 19013

Equal Opportunity Program / Employer. Auxiliary aids and services are available upon request to individuals with disabilities. For Equal Opportunity concerns, please contact Tatiana Moskatova, EO Compliance Officer at moskatovat@co.delaware.pa.us or 610-359-5020(TTY). Language Assistance Services are available free of cost. This program is supported by the U.S. Department of Labor as part of an award from the Delaware County Workforce Development Board totaling \$274,952 with \$42,000 (15%) state, local and/or non-governmental funds.

A proud partner of the **AmericanJobCenter** network

Chester Education Foundation

STEP Program



STEP Program

(16-18 years old)

Success Training & Employment Program

-  **College & Career Counseling!**
-  **Resume & Interview Prep!**
-  **Paid Work Experience!**

Scan this QR code
for more information



EARN AS YOU LEARN!

The **STEP** program offers assistance with college or job applications, financial literacy workshops, tutoring, writing resumes, preparing for interviews, & more!

If you are 16-18 years old and reside in Chester, PA, Chester Education Foundation would love to help you take the next **STEP** towards your future. Contact us now to get started!



egreene@chestereducation.org



(610) 364-1212



419 Ave of the States,
Suite 700
Chester, PA 19013

Equal Opportunity Program / Employer. Auxiliary aids and services are available upon request to individuals with disabilities. For Equal Opportunity concerns, please contact Tatiana Moskatova, EO Compliance Officer at moskatovat@co.delaware.pa.us or 610-359-5020[TTY]. Language Assistance Services are available free of cost. This program is supported by the U.S. Department of Human Services as part of an award from the Delaware County Workforce Development Board totaling \$300,000 with \$42,000 (14%) state, local and/or non-governmental funds.

A proud partner of the **AmericanJobCenter** network

February 2023

J. Lewis Crozer Library

Black History Month events



COLLABORATIVE

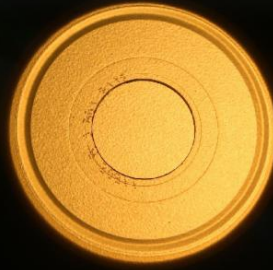


Pick up a piece of our growing quilt celebrating African American History and Heroes, color it and bring it back and we'll add it to the library's quilt!



Celebrate 50 Years of Hip Hop

FEB



21ST

3:30 PM

***Going
Platinum***

Craft for kids

5:00 PM

***Freestyle:
The Art of Rhyme***

Documentary film screening

February 2023

Widener University

COMMUNITY CLINIC SERVICES

Widener University

Serving uninsured
and underinsured
community members

Physical Rehab Services

Physical Therapy

Monday-Thursday: 4:30-6:30 pm
610-499-4585 | \$5 donation

Occupational Therapy

Monday-Thursday: 4:30-6:30 pm
610-499-4585 | \$5 donation

Speech-Language Pathology (including bilingual services)

Monday-Thursday: 1-7 pm
610-499-1159 | no charge



Primary Care Services

Nursing Services

Chester Senior Center

Monday: 3:30-6 pm | no charge

Wellness Center at St. Paul's

Wednesday: 9 am-5 pm | no charge
Friday: 8 am-3 pm | no charge



Mental Health Services

Clinical Psychology Services for Adults

Monday & Wednesday: 1-7 pm
610-499-4585 | \$5 donation

Clinical Psychology Services for Children

Monday, Wednesday, Friday: 9 am-5 pm
610-499-1204 | sliding scale payment

Social Work Counseling Services

Monday - Friday: 9 am-5 pm
610-499-4682 | no charge

Biofeedback Services

Monday, Wednesday, Thursday: 9 am-5 pm
610-499-4514 | sliding scale

www.widener.edu

Widener University

"Current Conversations"



JEFF BROWN

Founded and formerly served as Chairman and CEO of Brown's Super Stores Inc., a twelve-store supermarket chain trading under the Shoprite & The Fresh Grocer Supermarket brands

Friday 2/17/23

12:00pm - 1:00pm EST

Zoom: <https://widener.zoom.us/j/9179516539>

February 2023

Chester NAACP

Will Richan, Chair, Environmental & Climate Justice Com., Chester NAACP

The Chester NAACP is focusing on three issues in its work on environmental concerns:

1. Trash incineration- We are working to reduce and ultimately eliminate trash incineration in Chester.
2. Liquefied natural gas (LNG)- We are opposed to having an LNG terminal anywhere along the riverfront.
3. Recycling- It is our hope to educate the public, including schoolchildren, on recycling.

Chester NAACP is one of a number of local organizations working on these issues. We can help set up presentations to groups and welcome questions and offers of help. We are also planning to do periodic updates. We can be reached by email at naacpchesterbranch@yahoo.com, with "ECJC" in the subject heading.

February 2023

Alzheimer's Association, Delaware Valley Chapter

Caregiver Conversations

Join the Alzheimer's Association Delaware Valley Chapter Caregiver Conversations: Stories & Voices from Communities of Color

Virtual Program | Thursday, February 23, 2023 | 3 to 5 p.m.

Join us for a virtual program focused on the unique challenges of sandwich-generation caregiving, healthy eating for the entire family and being mindful of cognitive changes as we age.

A panel session of local caregivers of color will highlight stories of caregiver strength as well as practical strategies for meeting and overcoming dementia caregiver challenges.

Reserve your seat and invite a family member or friend to attend!

REGISTER TODAY!

Visit <https://tinyurl.com/CGconversations223> or call the Alzheimer's Association 24/7 Helpline at 800.272.3900.

In partnership with



College of Health Sciences
Delaware Center for
Cognitive Aging Research



Widener University



Valene Campbell, MPT

BIPOC Dementia
Advocate

Caregiver

Diverse Literature
Author

*Mandel Smith, MS,
RD, LDN*

Penn State
Extension

Volunteer Educator



*Brenda Torres-Wells,
CTRS, CDP*

Volunteer
Community
Representative

Caregiver Strength Panelists

Julia Diggs

Former caregiver, support group co-facilitator

Jean Kirkley

Former caregiver, Boomers 'R Heros founder

Patricia Risher

Advocate, volunteer, former caregiver

Michael Williams

Former caregiver, volunteer educator

February 2023

The Scott Arboretum of Swarthmore College

"Winter Wonderland"



February 2023

Delaware County Planning Department

2 upcoming "Open House" events: 1 in Chester, 1 in Boothwyn (see respective fliers for more details)

Pop-Up Open House for Delaware County's Newest Park (Formerly the Don Guanella Site)

DELCO'S NEW
PARK
MASTER PLAN

Chester City Hall: Community Room
1 East 4th Street, Chester, Pa 19013
February 21, 2023
from 6:00 pm - 8:00 pm

Children's Corner

That's right we want to know what
the children want to experience at the park

Park Vision

Share your concept ideas for the new park

Survey

Complete the survey to
document your feedback

Park Update

Learn where we are in the process
and what to expect next



**WE WANT TO
HEAR FROM YOU**

The County's newest and largest park will be located on the former Don Guanella School site near Reed and Sproul Roads in Marple Township. The future park consists of 213 acres and is home to woodlands, wetlands, grassland, and many wildlife species.



Pop-Up Open House for Delaware County's Newest Park (Formerly the Don Guanella Site)

DELCO'S NEW
PARK
MASTER PLAN

Upper Chi Community Center
1950 Market Street, Boothwyn, Pa 19061
February 22, 2023
from 6:00 pm - 8:00 pm

Children's Corner

That's right we want to know what
the children want to experience at the park

Park Vision

Share your concept ideas for the new park

Survey

Complete the survey to
document your feedback

Park Update

Learn where we are in the process
and what to expect next



**WE WANT TO
HEAR FROM YOU**

The County's newest and largest park will be located on the former Don Guanella School site near Reed and Sproul Roads in Marple Township. The future park consists of 213 acres and is home to woodlands, wetlands, grassland, and many wildlife species.



February 2023

Chester Upland School District

Talent Show

CHS & STEM PRESENT:

"Chester's Got Talent"

Student & Staff Showcase Talent

Tickets: \$5

Scan QR code or use
link

[HTTPS://CUSD.SCHOOLCASHONLINE.COM
/FEE/DETAILS/186/422/FALSE/TRUE](https://cusd.schoolcashonline.com/fee/details/186/422/false/true)



****Proceeds will go
toward arts
scholarship fund!
Donations and
sponsorships
welcomed!**

Acts include:

SINGERS
DANCERS
POETS
MUSICIANS
MONOLOGUES
ARTISTS
STEPPERS
DRUMLINE

DATE:

FRIDAY

march

10

6:00 PM

CHESTER
HIGH SCHOOL
AUDITORIUM



FOR MORE INFO SEE MS. BOWSER IN CHS A-222
OR EMAIL DBOWSER@CHESTERUPLANDSD.ORG
OR CALL DISTRICT CELL AT (445)-255-1880

February 2023

Child and Family Focus

Call for Respite Providers

Do you have a heart ...



...for helping others?

If so, become a Respite Provider!

We invite you to help support families raising children with emotional and behavioral needs by providing Respite Care!

COMMIT TO CARING FOR A CHILD THROUGH OUR RESPITE PROGRAM:

FOR AS LITTLE AS 12 HOURS PER MONTH IN THE CHILD'S HOME OR IN THE COMMUNITY

FOR MORE INFORMATION

**CONTACT US:
DELAWARE COUNTY
RESPITE PROGRAM**

**PHONE: 610-325-3131 EXT. 33 OR 22
RESPITE@CHILDANDFAMILYFOCUS.ORG**

**GENEROUS FINANCIAL COMPENSATION
STARTING BETWEEN
\$18- \$21 PER HOUR
\$27 - \$31.50 PER HOUR
FOR TWO-CHILD FAMILY**

fill out an application here

WWW.CHILDANDFAMILYFOCUS.ORG



Scan me

February 2023

4 Circles Beyond

Available position



4CB ASSISTANT DIRECTOR FOR PROGRAM DEVELOPMENT & COMMUNITY CONNECTIONS (PDCC)

4 Circles Beyond, Inc. [4CB] is seeking a creative and independent individual to serve as Assistant Director for Program Development & Community Connections (PDCC). The PDCC must be grounded in an anti-oppression, liberation-affirming approach and be experienced in program planning, dedicated to youth development, skilled in community outreach and committed to equity, justice and the well-being of all.

The PDCC will join the 4CB team to design and lead strong programs based in peace, liberation, leadership & the arts (PLA). Primary responsibilities will be to co-design, plan and lead the 4CB After-School Enrichment Program and the PLA 2023 Summer Camp. The PDCC will engage community families (primarily in Chester, PA) participating in PLA programs and will be an active co-creator of a new 4CB high school focused on peace and liberation education (to begin offering courses in 2024).

A strong candidate will bring skills in one or more of the following areas: Gardening, Visual or Theater Arts, Study/Homework Skills, Dance, Music, Somatic practices, Community Organizing or Environmental Justice. Join a small, heart-centered and hard-working team dedicated to social justice, the well-being of all and enjoying life together!

PDCC Responsibilities include:

- 1) Develop and Lead a new 4CB After School Enrichment Program in Chester, PA (create and implement a plan to accomplish the program development, marketing and to administer the program)
- 2) Identify leverage points for strengthening neighborly & political networks in the future school community
- 3) Boost our visual and communal presence – become a daily/regular attender at key events, regular school district meetings, gatherings of non-profit agencies, etc.
- 4) Develop implementation plans for 4CB/AP&LE based on the vision, mission and business strategies laid out by the 4CB President, Advisory and Governance Boards
- 5) Work with the 4CB Project Coordinator to increase visibility on social media
- 6) Assist in staffing public events (fundraising events, PL&A events, Workshops)
- 7) Supervise program staff, contractors and volunteers
- 8) Develop and Lead the 2023 PLA Summer Camp (Recruitment, Hiring, Programming, Supervision)

Start Date March 1 - April 15, 2023. Salary Range USD \$55,000 - USD \$70,000 / year

This is an independent contractor position based on 30hrs/week. The contracted salary will be based on level of previous experience and skill set. APPLY: Send cover letter and resume to: Susan@4circlesbeyond.org

February 2023

Delaware County Literacy Council

Free Home Health Aid trainings



FREE HOME HEALTH AIDE TRAININGS!

- Small class instruction with one-on-one help!
- Learn content and practice clinical skills!
- One-on-one employment help during and after program!

ENROLLING NOW!!!

For more information or to apply,
scan the QR code!



NO QR SCANNER?

Visit:
<https://bit.ly/dclc-hha>
or email Alison:
apriebe@delcoliteracy.org



February 2023

Child Guidance Resource Center

"Elevator Stories" Distribution

Please reach out to Alex Shoemaker if your organization can display stories in the elevators in your building.

Contact

February 2023

Amachi Chester Mentoring

Black History Brunch

Amachi Chester Mentoring Group Presents

Black History Brunch & Documentary Screening



FEB
18

12-2

FOOD BY
EVERYBODY EATS

Documentary highlights some of Chester's most historic athletes.
Come break bread with us as we learn about Chester's great history.

801 Sproul Street, Chester, Pa, 19013 | More Info: 484-318-6781

February 2023

Keep Music Alive

Teach Music Week 2023



[Sign up your location](#)

[Find participating locations](#)

February 2023

The Foundation for Delaware County

The need for affordable, safe, and stable housing has always been a pressing concern for our maternal health programs' clients but has become even more so since the COVID-19 pandemic. Our HOPE program includes housing placement, case management, tenancy and financial education, connection to resources, and direct financial assistance with rent and utility arrears.

In addition to providing direct services, we also engage in advocacy to address the systemic barriers to healthy permanent housing by serving as a catalyst and convener to collectively build a more equitable housing system in Delaware County.

Contact Haley Kulp for more information: hkulp@delcofoundation.org

Learn more

The Foundation for Delaware County

SNAP Benefits Changes

Do You Receive SNAP Benefits? Emergency Allotments Are Ending!

WHAT IS CHANGING?

- The extra SNAP payment, officially called Emergency Allotments, will end in February 2023.
- Starting in March, only one SNAP payment will be loaded to your EBT card in the first half of the month.
- Call the customer service center at 877-395-8930 to verify the amount.

WHAT SHOULD I DO?

- Your benefit amount is based on your income and the expenses the program allows you to report.
- Be sure to report up-to-date information as soon as possible so you receive all the benefits you are eligible for.

MAKE SURE THE COUNTY ASSISTANCE OFFICE (CAO) HAS UP-TO-DATE INFORMATION

Make sure you report important changes, like:

Your Address.

- You may miss important updates if the COA does not have your current address.

Your income and the income of others in your SNAP household.

- Did you lose work hours or have your pay cut? If you are earning less, you may qualify for more SNAP benefits.

Your expenses and other allowable deductions.

- Are you paying more for childcare?
- If you are a senior or have a disability, do you pay more than \$35 in medical expenses per month? Providing proof of these expenses may help you qualify for more SNAP. Learn more at [IncreasingSNAP-MedDeductions.pdf](#).
- Did your rent, mortgage, or property taxes increase? In some cases, reporting this may help you qualify for more SNAP.

YOU DO NOT NEED TO SPEND ALL OF YOUR SNAP

You can keep SNAP benefits on your EBT card if you want, so long as you use the card once every 9 months to keep it active. If you find that the extra SNAP is giving you a little more money for food than you need to spend, you can save them to spend in a later month to provide a little wiggle room for when the second payments end in March 2023.



¿Recibe Beneficios de SNAP? Las Asignaciones de Emergencia están Terminando!

¿QUÉ ESTÁ CAMBIANDO?

- El pago adicional de SNAP, oficialmente denominado Asignaciones de Emergencia, finalizará en febrero de 2023.
- A partir de marzo, solo se cargará un pago de SNAP a su tarjeta EBT en la primera mitad del mes.
- Llame al centro de atención al cliente al 877-395-8930 para verificar el monto.

¿QUÉ TENGO QUE HACER?

- El monto de su beneficio se basa en sus ingresos y los gastos que el programa le permite informar.
- Asegúrese de reportar información actualizada tan pronto como sea posible, para que reciba todos los beneficios para los que es elegible.

ASEGÚRESE DE QUE LA OFICINA DE ASISTENCIA DEL CONDADO (CAO) TENGA INFORMACIÓN ACTUALIZADA

Asegúrese de informar cambios importantes, como:

Su Dirección.

- Es posible que se pierda actualizaciones importantes si la oficina de asistencia no tiene su dirección actual.

Sus ingresos y los de otros en su hogar SNAP.

- ¿Perdió horas de trabajo o le redujeron el salario? Si gana menos, puede calificar para más beneficios de SNAP

Sus gastos y otras deducciones permitidas.

- ¿Está pagando más por el cuidado de los niños?
- Si es una persona mayor o tiene una discapacidad, ¿paga más de \$35 en gastos médicos al mes? Proporcionar prueba de estos gastos puede ayudarlo a calificar para más SNAP. Obtenga más información en [IncreasingSNAP-MedDeductions.pdf](#).
- ¿Aumentaron sus impuestos sobre el alquiler, la hipoteca o la propiedad? En algunos casos, informar esto puede ayudarlo a calificar para más SNAP.

NO NECESITA GASTAR TODO Asistenci SU SNAP

Puede mantener los beneficios de SNAP en su tarjeta EBT si lo desea, siempre que use la tarjeta una vez cada 9 meses para mantenerla activa. Si descubre que el SNAP adicional le está dando un poco más de dinero para alimentos de lo que necesita gastar, puede guardarlos para gastarlos en un mes posterior para proporcionar un pequeño margen de maniobra para cuando finalicen los segundos pagos en marzo de 2023.



The Foundation for Delaware County

(Pandemic resources for pregnant and postpartum women in the Delaware County)

Denise R. Martin

Outreach and Engagement Specialist/Cribs For Kids Coordinator

The Foundation For Delaware County
Baldwin Tower
1510 Chester Pike, Suite 300/301
Eddystone, PA 19022
Tele: (610) 619-6113
Cell: (267) 453-7342
Email: dmartin@delcofoundation.org

- **Healthy Start** is a Community Health Worker model with tiered case management services for pregnant women. Staff focus on healthcare access to help ensure full-term and healthy pregnancies, support breastfeeding and infant care, manage information and resource coordination, connect moms with in-house counseling for Perinatal Mood and Anxiety Disorders

or postpartum depressions, and civil legal assistance through our Medical Legal Partnership program.

- **Nurse Family Partnership** pairs first-time, low-income mothers with home-visiting nurses throughout Delaware County. Women must be enrolled in the program prior to 28 weeks to be eligible for the program which continues until the baby's 2nd-birthday. This relationship-based program focuses on healthcare access and health education, positive parenting, infant growth and development, and support for mom in working towards self-sufficiency. Enrolled mothers are also able to access behavioral health supports and civil legal assistance.
- **Delaware County WIC (Women, Infants and Children) Program** is also a great program to ensure healthy pregnancies and improve birth outcomes, focusing on growth and development of children. It provides eligible pregnant, postpartum and breastfeeding women, infants and children under age 5 with nutrition information, breastfeeding support, and nutritious food and referrals. WIC helps to build strong, healthy families and ensure kids enter kindergarten healthy and ready to learn!
- **Cribs for Kids** is a referral-based program to provide Safe Sleep Education and a new Pack & Play to families who are challenged by extreme poverty and displacement due to domestic violence or house fires. Cribs for Kids nationally has been an important resource and champion in the fight to prevent sleep-related deaths in communities across America.
- **The Center for Hispanic Resources** is a drop in (now telephonic) program that provides assistance to Delaware County's Spanish-speaking community. Bilingual case management staff assist participants with completing applications, making appointments and connecting with community-based resources, providing translation services and limited interpretation services.

**The Foundation for Delaware County's
Healthy Start, Nurse-Family Partnership &
Cribs for Kids staff
are here for you during the COVID-19 Crisis.**

**If you are pregnant and live in Delaware County, please contact us to learn about our helpful programs including; telehealth nurse and case management support, social work services, safe sleep education and supplies, breastfeeding support and civil legal assistance. Please share with others who may qualify!
Bilingual (Spanish-speaking) staff available.**

To find out more please contact Denise Martin, Outreach and Engagement Specialist, at 267-453-7342 or by email at dmartin@delcofoundation.org

Our referral form is [here!](#)



***Please join us for the March CTC meeting on
Thursday, March 9th at 9:00AM.***

ZOOM INFORMATION FOR MEETING

Zoom ID: 955 2608 7607

Passcode: 982073

Join Zoom Meeting

[https://zoom.us/j/95526087607?](https://zoom.us/j/95526087607?pwd=NG9BeWpMTFdVNnJSSHJGZm1EQmNWdz09)

[pwd=NG9BeWpMTFdVNnJSSHJGZm1EQmNWdz09](https://zoom.us/j/95526087607?pwd=NG9BeWpMTFdVNnJSSHJGZm1EQmNWdz09)

Visit CEF's
website



The CTC Newsletter is funded in part by the COPE Grant which is Coordinated by Holcomb Behavioral Health Systems, and funded by the Delaware County Department of Human Services, Division of Drug of Alcohol.